

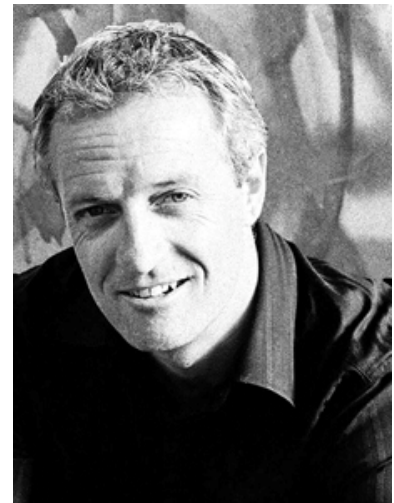


Profile...

Alan Le May

Alan's passion to help young people comes from his own experience growing up. *"I was a confused kid," says Alan, "Insecure and vulnerable to peer pressure. I made some poor decisions - dropping out of school, taking drugs and crashing motorcycles because of reckless behaviour. I once was a young person who needed help."*

It was while recovering from a motorcycle accident at 19 years old that some Christian people offered a helping hand. Alan found hope and strength in the Christian faith and his life took on new meaning. Alan is fully committed to sharing the principles of his faith that changed his life with others, particularly young people.



Executive Director

Alan's association with Teen Challenge began in 1992 as a volunteer coordinator of a Teen Challenge outreach program. He accepted the full-time position of Prevention & Outreach Coordinator in 1994, and was appointed Executive Director for Teen Challenge Queensland in 1996. From 2003 to 2006 Alan assumed the additional responsibility as Teen Challenge National Director.

Alan's achievements with Teen Challenge include:

- Establishing the New Life Centre - A multi-million dollar facility offering young men a twelve-month residential rehabilitation program.
- Developing Project DOV – An innovative partnership between Teen Challenge and the Queensland Ambulance Service to follow up patients who have overdosed on drugs.
- Gaining registration for Teen Challenge as a Recognised Training Organisation delivering accredited training programs for youth workers.
- Overseeing the commencement of Teen Challenge in Alice Springs.

An ordained minister with the Assembly Of God Church, Alan is a popular itinerant preacher, motivational speaker and seminar presenter. His gift is his ability to clearly communicate principles from his faith that inspire people to be the very best they can.

Alan is a committed athlete maintaining a daily training routine and achieving podium results at state and national cycling competitions. As a cyclist Alan is a level one coach, state commissair, and networks extensively within the cycling community rallying their support for Teen Challenge.